



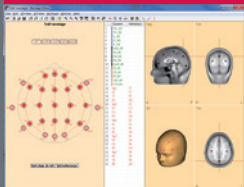


## BESA Research 6.0

Choose the best signal processing for your EEG and MEG data

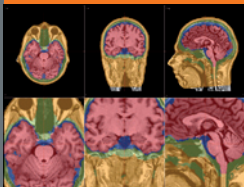
- Preprocessing / filtering
- Artifact correction / rejection
- Classic ERP analysis
- Source montages
- ICA / PCA
- Dipole fitting / regional, single dipoles
- Distributed source analysis / (s)LORETA CLARA, LAURA, SSLOFO, Minimum Norm, User-defined
- Multiple source beamforming
- Realistic head models (FEM) in combination with BESA® MRI
- Time-frequency analysis
- Coherence in sensor and source space using DICS or source montages
- Coregistration with individual MRI / fMRI
- Batch processing
- MATLAB® interface

### Montage Editor



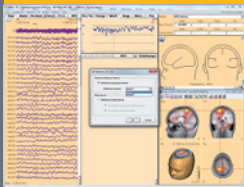
User montages can be easily defined in the graphical montage editor

### Using Individual Anatomy



Individual FEM models (generated in BESA® MRI) can be used for source analysis

### Source Coherence (DICS)



Coherence between an external source and any brain voxel