

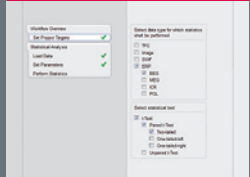


BESA Statistics 1.0

CE-certified software for cross-subject statistics of EEG / MEG data

- Cross-subject statistics of
 - Event-related potentials / fields
 - Image data, e.g. LORETA, beamforming
 - Time-frequency data, e.g. temporal-spectral evolution, coherence, inter-trial phase-locking
 - Source waveforms
- Two groups (e.g. patients, controls) or conditions within the same group of subjects (e.g. time 1, time 2) can be compared
- Significant clusters in time and if applicable space and frequency are determined that show robust differences between groups / conditions
- Results are corrected for multiple comparisons
- Significant data clusters are visualized in categories (highly significant, significant, trend)
- Statistical values can be directly used in scientific reports without further analysis
- All statistical parameters can be exported
- Pictures of statistical analysis can be saved as vector graphics (eps) and are suitable for publications

Intuitive Workflow



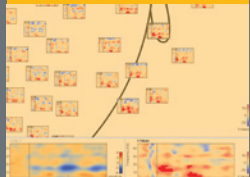
- ERP/F
- Images
- Time-frequency
- Source waveforms

Cross-Subject Statistics



Significant clusters in time, space, and frequency are determined by permutation testing

Visualization of Data



Significant clusters are visualized. Images are suitable for publications